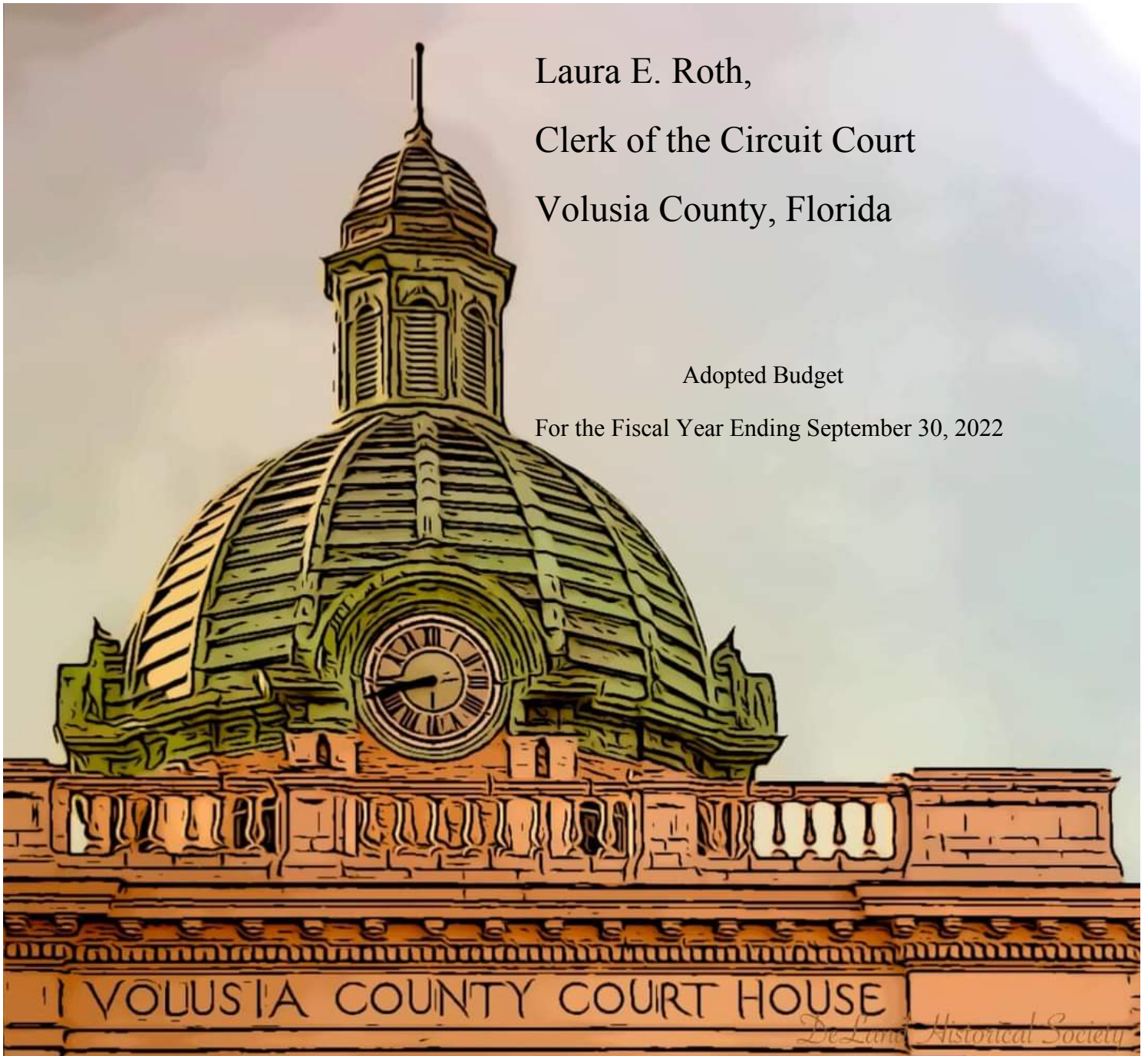


Laura E. Roth,  
Clerk of the Circuit Court  
Volusia County, Florida

Adopted Budget

For the Fiscal Year Ending September 30, 2022



**LAURA E. ROTH**  
**CLERK OF THE CIRCUIT COURT - VOLUSIA COUNTY, FLORIDA**

TABLE OF CONTENTS  
FOR THE FISCAL YEAR ENDING SEPTEMBER 30, 2022

Budget Letter from the Clerk of the Circuit Court

Budget Overview

The overview gives information on the Clerk's office and budget preparation practices.

Clerk's Budget Resolution Budgets Set by the Clerk of the Circuit Court

Budget Summary - All Funds

Summary revenue and expenditure information for the General Fund and Special Revenue Funds.

General Fund - Budget Summary

Summary revenue and expenditure information for the General Fund.

General Fund - Budget Revenues

The detail of revenues by the functional areas of Court and General Government.

General Fund Budget Court Expenditures by Department

The detail of expenditures by the functional areas of court operations.

General Fund Budget General Government Expenditures by Department

The detail of expenditures by the functional areas of non-court operations.

General Fund Budget Expenditures by Division - Overhead Allocations

The detail of expenditures for administrative expenses.

Special Revenue Funds - Budget Summary

The detail of revenues and expenditures by the fund for special revenue funds.

Organization Chart

Budgeted FTE Schedule

This schedule shows the full time equivalent positions provided for in the budget.

**LAURA E. ROTH**  
CLERK OF THE CIRCUIT COURT  
SEVENTH JUDICIAL CIRCUIT – VOLUSIA COUNTY, FLORIDA

September 30, 2021

Dear Members of the County Council:

In accordance with Section 218.35(3) of the Florida Statutes, I am pleased to present the Clerk of the Circuit Court budget for the fiscal year ending September 30, 2022. The activities of the Clerk include a wide range of recordkeeping, financial management, and information management services related to the court system and the public records of Volusia County.

**BUDGET PROCESS**

The General Fund budget of the Clerk is separated into Court Related and General Government activities. A separate budget is required for Court Related revenues and expenditures which is reviewed by the Florida Clerks of Court Operations Corporation and submitted to the legislature and the Supreme Court each year.

Functions of the Clerk as relates to the Circuit and County Courts

- Maintains custody and control of all court files.
- Attends court sessions.
- Files indictments, pleadings and verdicts.
- Summons jurors, witnesses and defendants.
- Prepares the appellate record.
- Conducts mortgage foreclosure sales.
- Assists victims of abuse in completing the paperwork necessary to seek injunctions for protection.
- Assists plaintiffs in completing the paperwork necessary to file for a simplified divorce.
- Assists plaintiffs in completing the paperwork necessary to file a small claims lawsuit.
- Administers oaths.
- Compiles and reports statistical and financial data.

Clerk of the Circuit Court – Volusia County  
Budget for Fiscal Year Ending September 30, 2022

Functions of the Clerk as relates to General Government functions of County Recorder

- Records and indexes deeds, mortgages and real estate transactions.
- Processes tax deed applications and conducts tax deed sales.
- Records public defender liens and all judgments rendered by the court.
- Maintains public land records.
- Processes marriage licenses and passports.
- Performs marriage ceremonies.

Functions of the Clerk as relates to the support of the Criminal Justice Community

- Provide support warrant tracking software and hardware to VSO.
- Provide support warrant service software and hardware to VSO and other Volusia County Law Enforcement agencies.
- Provide and support Drug Court with case maintenance and integration software.
- Provide and support Pre-trial Services with case maintenance software.
- Provide and support the judiciary with electronic case file access.
- Support information exchanges with the Sheriff, Jail, State Attorney, and Public Defender.

Special Revenue Funds

The Special Revenue Funds are used to account for the proceeds of specific revenue sources that are legally or administratively restricted to expenditures for specified purposes. The Clerk has two Special Revenue Funds which are governed by Chapter 28 of the Florida Statutes. They are the Modernization Trust Fund Court Technology \$1.90, and the Modernization Trust Fund Public Records Modernization \$1.00.

Excess Fees and Unexpended Appropriations

The Clerk is required under Section 218.36 of the Florida Statutes to submit to the County of Volusia, all excess fees from general government operations by October 31<sup>st</sup> after the close of the fiscal year.

The Clerk is required to remit unexpended appropriations for the Court-Related activities to the State of Florida. The unexpended amount for the fiscal year ending September 30, 2022 must be remitted by January 25, 2023.

The Clerk does not have the opportunity to accumulate net assets in the general fund.

Clerk of the Circuit Court – Volusia County  
Budget for Fiscal Year Ending September 30, 2022

**REVENUE HIGHLIGHTS**

The Court-Related activities are funded by revenues from fines, fees, and service charges. Distributions from the Clerk of Court Trust Fund will be made to fund Clerks with revenues insufficient to meet their approved budget expenditures. The Volusia Clerk is scheduled to receive \$2,790,873 for this purpose. This represents 23.36% of the total court budget.

Various factors were considered in preparing the budget for the 2021 fiscal year. The Clerk expects the recording fee revenues to remain stable for the coming fiscal year due to the strength of the housing market. The recording fees for 2021 are projected at \$3.43 million. The recording fees expected for the 2022 fiscal year are budgeted at \$3.4 million.

**EXPENDITURE HIGHLIGHTS**

The General Fund budget expenditures for 2021 are projected to be \$14,218,753. The budgeted expenditures for 2020 were \$17,043,686.

The Clerks of Court Operations Corporation (the “CCOC”) submitted a budget request for all Clerks in the State of Florida to the Legislative Budget Commission on August 31, 2021. The total proposed budget for all Clerks is \$444 million, as determined by the State’s Revenue Estimating Conference. The Volusia Clerk’s approved CCOC court budget of \$11,626,073 represents 2.61% of this total.

The personal services costs for employee wages and benefits represent 81.9% of the total General Fund Budget.

It is a privilege for me to present this budget for your examination

Sincerely,



Laura E. Roth  
Clerk of the Circuit Court

**LAURA E. ROTH**  
**CLERK OF THE CIRCUIT COURT - VOLUSIA COUNTY, FLORIDA**  
**Budget Overview - Fiscal Year Ending September 30, 2022**

INTRODUCTION

**Historical Overview**

The County of Volusia, Florida (the “County”), implemented a County Home Rule Charter on January 1, 1971, as provided by Section 125.60 of the Laws of Florida. The County operates under an elected County Council and provides services to its more than 550,000 residents. Section 503 of the Charter specifically excludes the office of the Clerk of the Circuit Court (the “Clerk”) and its related activities, as it is a separate governmental unit governed by the Constitution and Laws of Florida. The Clerk’s annual budget does not include the budget of the County Council Charter government (the “County of Volusia, Florida”) representing the County Council, Supervisor of Elections, Sheriff and Property Appraiser.

**Current Economic Environment**

At the start of 2020 the Volusia County economy was thriving and the Clerk’s office was set to have an excellent year when the pandemic forced an office closure, layoffs, and lost revenues. The impact of the coronavirus pandemic carried over into 2021, however revenues have begun to pick up with more people returning to work. We have been challenged with the postponement of jury trials, evictions, and foreclosures, numerous Governor and Supreme Court imposed orders, as well as, local administrative orders, and challenges with hiring qualified applicants. Challenges continue into 2022 with keeping our employees and customers safe and healthy, and dealing with a backlog of court case work caused by the pandemic, and maintaining our workforce during the “Great Resignation.”

MAJOR REVENUES

The Clerk of Courts Operations Corporation, an entity of State government sets the court-related budget based on the revenue forecast for all clerk offices with the State. The Volusia County Clerk determines the budgeted revenues for other governmental services and activities that are analyzed and modified to reflect local experience.

**Court Fines, Fees, & Services Charges:** These revenues are derived from charges that are set out by various Florida Statute to be assessed for all court case types and are budgeted at \$8,823,200 for FY 2021-22.

**Other Governmental Services:** These revenues collected based on various Florida Statutes for services provided for recording public records, processing tax deeds, marriage licenses and passports and are budgeted at \$4,430,000 for FY 2021-22.

**Modernization Trust Funds:** These revenues are derived from fees charged under Florida Statute 28.24 (12) and are used to modernize court technologies and to improve technologies for the retention of public records and are budget at \$2,050,000 for FY 2021-22.

**County Support for IT Operations:** Volusia County has partnered with the Clerk to provide technology needs for the courts and the county under Florida Statute 29.008(1)(f)(2) by providing the Clerk's office a monthly stipend to cover IT operating costs, and are budgeted at \$2,415,000 for FY 2021-22.

## MAJOR EXPENDITURES

Court Operations

Other Government Services (Recording, Marriage Licenses, Passports, Tax Deeds and Records Management)

IT Operations

Modernization Trust Fund

## FINANCIAL STRUCTURE

To provided fiscal accountability for the various resources, funds have been established. Each fund is a separate entity with its own resources, expenditures and liabilities and residual balance.

**General Fund** – The General Fund is the general operating fund of the Clerk. It is used to account for all financial resources, except those required to be accounted for in another fund.

**Special Revenue Funds** – The special revenue funds are used to account for the proceeds of specific revenue sources that are legally or administratively restricted to expenditures for specified purposes. The Clerk has two Special Revenue Funds: Modernization Trust Fund - Public Records Modernization and Modernization Trust Fund - Court Technology.

**Fiduciary Activities** – Fiduciary Funds account for assets that do not belong to the Clerk, but are under the Clerk's control for administration as the Court directs. These funds are not available to support the operations of the Clerk's office.

Custodial Funds – This type of fiduciary fund accounts for assets belonging to others that are held in a custodial capacity pending the release and direction of the Court.

## BUDGETARY POLICIES

The Clerk follows these procedures in establishing the budgetary data:

- (1) Section 218.35 of the Florida Statutes requires the Clerk, as a fee officer, to establish an annual budget reflecting resources available and function for which funds are to be expended.
- (2) The proposed budget is to be filed with the clerk of the County Council within 30 days after adoption.
- (3) The Clerk was required to submit a budget for court-related revenues and expenditures (for functions elaborated in Section 28.36 of the Florida Statutes) for the fiscal year ending September 30, 2021 to the Florida Clerk of Court Operations Corporation. The budget was submitted in accordance with Section 28.36 of the Florida Statutes. The corporation reviewed the budget request approved the final budget on September 21, 2021.
- (4) The Clerk can amend the General Government budget (Non-court General Revenue Fund) and special revenue budgets as deemed necessary during the year. Budgetary control is at the total revenue and expenditure level.
- (5) The Clerk must request approval from the Florida Clerks of Court Operations Corporation in order to amend the Court related budget. Budgetary control is at the total revenue and expenditure level.
- (6) The Clerk must remit to the General Fund of the County of Volusia, Florida, any excess revenues over expenditures for general government operations in the Clerk's General Fund. This must be done by October 31st after the close of the fiscal year, in accordance with Section 218.36 of the Florida Statutes.
- (7) The Clerk must remit to the State of Florida General Revenue Fund the unexpended revenues for the period October 1, 2020 to September 30, 2021 by January 25, 2022.
- (8) Formal budgetary integration is employed as a management control device during the year for the Clerk's General Fund and Special Revenue Funds. Appropriations lapse at the close of the fiscal year.
- (9) The budgets for the Clerk's General and Special Revenue Funds are adopted on a basis consistent with generally accepted accounting principles.

## EXPLANATION OF BUDGET FUNDING SOURCES

**Court Operations:** The Florida Legislature is responsible for funding any shortfall in the Clerk's Court related budget. The court revenues are fees and service charges for court users. The County of Volusia retains the responsibility for funding some Court related costs including facilities, communications, and shared technology. The Legislature created the Clerks of Court Operations Corporation (CCOC) to assist the Clerks in the development of their budget and to approve those budgets within statutory guidelines.

**General Government:** The Clerk collects recording fees as well as tax deed and marriage fees that fund non-court operations. In addition to the recording of official records, centralized administrative functions including human resources, purchasing, mail and general management are provided by Clerk's



Administration. The Clerk receives transfers from the County to provide funding for the Clerk's Information Technology department. Unspent non-court revenues are returned to the County as excess fees. The Clerk has approval authority for the non-court budget.

Title IV-D Grant Reimbursement: Clerks are responsible for assisting in collecting Court ordered child support payments. The Clerk has entered into a contract whereby the Federal government reimburses the Clerk for the cost incurred in providing this service. These services are provided by employees in the Child Support Department and Family Law Departments and their time is captured and expenses are not included in our court related budget. Grant revenues are classified as non-court. The 2022 budget revenue from this grant is \$200,000.

#### EXPENDITURE INFORMATION

The General fund budget expenditures (unaudited) for 2021 were \$14,218,753. The budgeted expenditures for 2021 were \$17,043,686. The budgeted expenditures for 2022 are set at \$19,006,597.

Indirect administrative expenses benefit Court Related and General Government operations and are allocated according to the method used for State court budget reporting. The allocation percentages for the fiscal year ending September 30, 2022 are 80% to Court Related and 20% to General Government.

The personal services costs for employee wages and benefits represent 81.9% of the total General Fund budget.

Volusia County Clerk of the Circuit Court

Budget Resolution  
Fiscal Year 2021 – 2022

RESOLUTION OF THE CLERK OF THE CIRCUIT COURT FOR VOLUSIA COUNTY, FLORIDA, ADOPTING THE ANNUAL BUDGET FOR FISCAL YEAR 2021 –2022; PROVIDING FOR AN EFFECTIVE DATE.

---

WHEREAS, The Clerk of the Circuit Court of the County of Volusia, State of Florida, in accordance with Section 218.35(1), Florida Statutes, is required to set a budget for the following activities and funds of the said office for each fiscal year. Budgets for the court-related functions of the office are set by the Clerk of Courts Operations Corporation and the State of Florida, and are not formally adopted by the Clerk in this resolution.

General Fund - General Government Operations	\$	4,430,000
Court Modernization Trust Fund		4,704,000
Records Modernization Trust Fund		1,769,200
Total	<u>\$</u>	<u>10,903,200</u>

NOW, THEREFORE, BE IT RESOLVED THAT THE CLERK OF THE CIRCUIT COURT OF THE COUNTY OF VOLUSIA, FLORIDA DOES HEREBY SET THE AFORMENTIONED BUDGETS EFFECTIVE OCTOBER, 1, 2022. THIS RESOLUTION WILL TAKE EFFECT IMMEDIATELY UPON ITS ADOPTION. DONE, ORDERED AND ADOPTED THIS 24th day of September, A.D., 2021.

CLERK OF THE CIRCUIT COURT  
VOLUSIA COUNTY, FLORIDA

BY: 

LAURA E. ROTH  
CLERK

**LAURA E. ROTH**  
**CLERK OF THE CIRCUIT COURT - VOLUSIA COUNTY, FLORIDA**

**BUDGET SUMMARY - ALL FUNDS**  
**FOR THE FISCAL YEAR ENDING SEPTEMBER 30, 2022**

	<u>GENERAL FUND</u>	<u>SPECIAL REVENUE FUNDS</u>	<u>TOTALS</u>
Revenues	\$ 19,006,597	\$ 2,051,700	\$ 21,058,297
Carry Forwards	-	4,421,500	4,421,500
TOTALS	<u>\$ 19,006,597</u>	<u>\$ 6,473,200</u>	<u>\$ 25,479,797</u>
Expenditures	\$ 17,782,987	\$ 1,598,770	\$ 19,381,757
Reserves	1,223,610	4,874,430	6,098,040
TOTALS	<u>\$ 19,006,597</u>	<u>\$ 6,473,200</u>	<u>\$ 25,479,797</u>

**LAURA E. ROTH  
CLERK OF THE CIRCUIT COURT - VOLUSIA COUNTY, FLORIDA**

**GENERAL FUND - BUDGET SUMMARY  
FOR THE FISCAL YEAR ENDING SEPTEMBER 30, 2022**

	<u>COURT OPERATIONS</u>	<u>GENERAL GOVERNMENT</u>	<u>GENERAL FUND TOTALS</u>
Revenues	\$ 12,161,597	\$ 6,845,000	\$ 19,006,597
Expenditures	\$ 12,161,597	\$ 5,621,390	\$ 17,782,987
Reserves	-	1,223,610	1,223,610
TOTALS	<u>\$ 12,161,597</u>	<u>\$ 6,845,000</u>	<u>\$ 19,006,597</u>

VOLUSIA COUNTY CLERK OF THE CIRCUIT COURT  
GENERAL BUDGETED FUND REVENUES  
FOR THE FISCAL YEAR ENDING SEPTEMBER 30, 2022

GL NUMBER	DESCRIPTION	ORIGINAL BUDGET
001-00-3316501	CHILD SUPPORT IV-D GRANT	\$ 200,000
001-00-3358001	COURT BUDGET APPROPRIATION	2,790,873
001-00-3358003	JURY REIMBURSEMENT FROM STATE	335,524
001-00-3690101	COUNTY GRANT INFO TECH COST	3,400,000
INTERGOVERNMENTAL REVENUES		<u>6,726,397</u>
001-00-3411001	RECORDING FEES \$5/\$4	-
001-00-3411002	EXTRA INDEXING FEES	31,000
001-00-3411004	COPIES & CERTIF - NONCOURT	130,000
001-00-3411005	AFFADAVIT SIGN & SEAL	700
001-00-3411007	OATH FEES - NONCOURT	100
001-00-3411009	MISC REVENUE-RECORDING OVERAGE	2,000
001-00-3411010	SEARCHING OF RECORDS	100
001-00-3419001	MARRIAGE LICENSE FEES	115,000
001-00-3419002	MARRIAGE CEREMONY FEES	32,000
001-00-3419003	PASSPORT APPLICATION FEES	60,000
001-00-3419004	DOC STAMP- INTANGIBLE FEES	500,000
001-00-3419005	NOTICE FEES	200
001-00-3419006	NOTICE OF CONTEST OF LIEN	500
001-00-3419007	NOTICE OF BOND \$20 F.S. 713.24	100
001-00-3419011	TAX DEED APPL FEES \$60	25,000
001-00-3419012	TAX DEED SURPLUS \$10	2,500
001-00-3419013	TAX DEED FORFEITURE DEPOSITS	2,500
001-00-3419014	TAX DEED TO COUNTY 3%,1.5%	46,000
001-00-3419016	ONLINE TAX DEED DEPOSIT FEE	3,000
001-00-3419017	HOME SOLICITATION FEE	500
001-00-3419018	PASSPORT PHOTO FEES	15,000
001-00-3419080	BAD CHECK FEES - NONCOURT	200
001-00-3419090	MICROGRAPHIC FEES	21,000
001-00-3419091	POSTAGE FEES-NONCOURT	38,000
001-00-3419099	MISCELLANEOUS FEES-NONCOURT	4,100
GENERAL GOVT NONCOURT REV		<u>1,029,500</u>

VOLUSIA COUNTY CLERK OF THE CIRCUIT COURT  
GENERAL BUDGETED FUND REVENUES  
FOR THE FISCAL YEAR ENDING SEPTEMBER 30, 2022

GL NUMBER	DESCRIPTION	ORIGINAL BUDGET
001-00-3481101	COUNTY CRIMINAL FILING FE	12,000
001-00-3481209	COUNTY CRIMINAL SERVICE CHARGE	60,000
001-00-3481301	COUNTY CRIMINAL COURT COSTS	310,000
COUNTY CRIMINAL - MISDEMEANOR		<u>382,000</u>
001-00-3482209	CIRCUIT CRIMINAL SERVICE CHARG	25,000
001-00-3482301	CIRCUIT CRIMINAL COURT COSTS	410,000
CIRCUIT CRIMINAL - FELONY		<u>435,000</u>
001-00-3483101	COUNTY CIVIL FILING FEE	2,800,000
001-00-3483201	COUNTY CIVIL SERVICE CHARGES	40,000
COUNTY COURT CIVIL		<u>2,840,000</u>
001-00-3484101	CIRCUIT CIVIL FILING FEE	1,000,000
001-00-3484102	FAMILY LAW FILING FEES	420,000
001-00-3484201	CIRCUIT CIVIL SERVICE CHARGES	280,000
001-00-3484801	CHILD SUPPORT DEPOSITORY FEES	100,000
CIRCUIT COURT CIVIL		<u>1,800,000</u>
001-00-3485209	TRAFFIC SERVICE CHARGES	300,000
001-00-3485301	TRAFFIC COURT COSTS	1,020,000
TRAFFIC		<u>1,320,000</u>
001-00-3486002	JUVENILE SERVICE CHARGES	3,000
JUVENILE		<u>3,000</u>
001-00-3487101	PROBATE FILING FEES	590,000
001-00-3487201	PROBATE SERVICE CHARGES	65,000
PROBATE		<u>655,000</u>
001-00-3511001	FINES-COUNTY CRIMINAL	100,000
001-00-3512001	FINES - CIRCUIT CRIMINAL	200,000
001-00-3515005	FINES - TRAFFIC	1,100,000
001-00-3516001	FINES - JUVENILE	200
FINES & FORFEITURES		<u>1,400,200</u>
001-00-3646441	SALE OF SURPLUS EQUIPMENT	500
001-00-3690101	COUNTY GRANT INFO TECH COST	2,415,000
MISC REVENUES		<u>2,415,500</u>
TOTAL GENERAL FUND REVENUES		<u><u>\$ 19,006,597</u></u>

VOLUSIA COUNTY CLERK OF THE CIRCUIT COURT  
GENERAL FUND COURT EXPENDITURES BY DEPARTMENT  
FOR THE FISCAL YEAR ENDING SEPTEMBER 30, 2022

GL NUMBER	DESCRIPTION	ORIGINAL BUDGET
Dept 04 - COUNTY CIVIL		
PERSONAL		
001-04-5001201	SALARIES & WAGES	\$ 405,850
001-04-5001400	OVERTIME WAGES	6,000
001-04-5002101	SOCIAL SECURITY TAXES	25,535
001-04-5002102	MEDICARE TAXES	5,970
001-04-5002200	RETIREMENT CONTRIBUTIONS	57,025
001-04-5002301	HEALTH INSURANCE	98,550
001-04-5002302	LIFE INSURANCE	550
001-04-5002303	DISABILITY INSURANCE	3,135
001-04-5002900	EMPLOYEE ASSISTANCE PROGRAM	330
PERSONAL		602,945
OPERATING		
001-04-5003405	CONTRACT SERVICES	3,000
001-04-5004230	FREIGHT & POSTAGE	8,500
001-04-5004660	OFFICE EQUIPMENT MAINTENANCE	300
001-04-5004701	PRINTING	300
001-04-5004901	TRAINING	500
001-04-5004910	ADVERTISING	500
001-04-5004920	OTHER MISC. EXPENDITURES	100
001-04-5005102	OFFICE EQUIPMENT < \$1000	500
OPERATING		13,700
Totals for dept 04 - COUNTY CIVIL		616,645
Dept 06 - TRAFFIC		
PERSONAL		
001-06-5001201	SALARIES & WAGES	1,414,605
001-06-5001400	OVERTIME WAGES	6,000
001-06-5002101	SOCIAL SECURITY TAXES	88,075
001-06-5002102	MEDICARE TAXES	20,600
001-06-5002200	RETIREMENT CONTRIBUTIONS	171,790
001-06-5002301	HEALTH INSURANCE	321,750
001-06-5002302	LIFE INSURANCE	1,950
001-06-5002303	DISABILITY INSURANCE	11,115
001-06-5002500	UNEMPLOYMENT COMPENSATION	7,150
001-06-5002900	EMPLOYEE ASSISTANCE PROGRAM	1,170
PERSONAL		2,044,205
OPERATING		
001-06-5003405	CONTRACT SERVICES	10,000
001-06-5004230	FREIGHT & POSTAGE	65,000
001-06-5004660	OFFICE EQUIPMENT MAINTENANCE	2,200
001-06-5004701	PRINTING	3,000
001-06-5004901	TRAINING	500
001-06-5004910	ADVERTISING	500
001-06-5004920	OTHER MISC. EXPENDITURES	500
001-06-5005201	OPERATING SUPPLIES	2,000
OPERATING		83,700
Totals for dept 06 - TRAFFIC		2,127,905

VOLUSIA COUNTY CLERK OF THE CIRCUIT COURT  
GENERAL FUND COURT EXPENDITURES BY DEPARTMENT  
FOR THE FISCAL YEAR ENDING SEPTEMBER 30, 2022

GL NUMBER	DESCRIPTION	ORIGINAL BUDGET
Dept 07 - COUNTY CRIMINAL - MISDEMEANOR		
PERSONAL		
001-07-5001201	SALARIES & WAGES	659,895
001-07-5001400	OVERTIME WAGES	5,000
001-07-5002101	SOCIAL SECURITY TAXES	41,225
001-07-5002102	MEDICARE TAXES	9,640
001-07-5002200	RETIREMENT CONTRIBUTIONS	70,440
001-07-5002301	HEALTH INSURANCE	148,500
001-07-5002302	LIFE INSURANCE	900
001-07-5002303	DISABILITY INSURANCE	5,130
001-07-5002500	UNEMPLOYMENT COMPENSATION	5,000
001-07-5002900	EMPLOYEE ASSISTANCE PROGRAM	540
PERSONAL		946,270
OPERATING		
001-07-5004230	FREIGHT & POSTAGE	5,000
001-07-5004701	PRINTING	3,000
001-07-5004901	TRAINING	500
001-07-5004910	ADVERTISING	500
001-07-5004920	OTHER MISC. EXPENDITURES	100
001-07-5005201	OPERATING SUPPLIES	3,000
OPERATING		12,100
Totals for dept 07 - COUNTY CRIMINAL - MISDEMEANOR		958,370
Dept 08 - PROBATE		
PERSONAL		
001-08-5001201	SALARIES & WAGES	507,255
001-08-5002101	SOCIAL SECURITY TAXES	31,450
001-08-5002102	MEDICARE TAXES	7,360
001-08-5002200	RETIREMENT CONTRIBUTIONS	58,005
001-08-5002301	HEALTH INSURANCE	115,500
001-08-5002302	LIFE INSURANCE	700
001-08-5002303	DISABILITY INSURANCE	3,990
001-08-5002900	EMPLOYEE ASSISTANCE PROGRAM	420
PERSONAL		724,680
OPERATING		
001-08-5004230	FREIGHT & POSTAGE	4,000
001-08-5004660	OFFICE EQUIPMENT MAINTENANCE	200
001-08-5004701	PRINTING	400
001-08-5004901	TRAINING	500
001-08-5004910	ADVERTISING	500
001-08-5004920	OTHER MISC. EXPENDITURES	100
001-08-5005201	OPERATING SUPPLIES	1,000
OPERATING		6,700
Totals for dept 08 - PROBATE		731,380



VOLUSIA COUNTY CLERK OF THE CIRCUIT COURT  
GENERAL FUND COURT EXPENDITURES BY DEPARTMENT  
FOR THE FISCAL YEAR ENDING SEPTEMBER 30, 2022

GL NUMBER	DESCRIPTION	ORIGINAL BUDGET
Dept 09 - FAMILY LAW		
PERSONAL		
001-09-5001201	SALARIES & WAGES	101,345
001-09-5002101	SOCIAL SECURITY TAXES	6,285
001-09-5002102	MEDICARE TAXES	1,470
001-09-5002200	RETIREMENT CONTRIBUTIONS	10,965
001-09-5002301	HEALTH INSURANCE	24,750
001-09-5002302	LIFE INSURANCE	150
001-09-5002303	DISABILITY INSURANCE	855
001-09-5002900	EMPLOYEE ASSISTANCE PROGRAM	90
PERSONAL		145,910
OPERATING		
001-09-5004901	TRAINING	500
001-09-5004910	ADVERTISING	500
001-09-5004920	OTHER MISC. EXPENDITURES	100
001-09-5005201	OPERATING SUPPLIES	2,000
OPERATING		3,100
Totals for dept 09 - FAMILY LAW		149,010
Dept 10 - CIRCUIT CIVIL		
PERSONAL		
001-10-5001201	SALARIES & WAGES	896,570
001-10-5001400	OVERTIME WAGES	10,000
001-10-5002101	SOCIAL SECURITY TAXES	56,210
001-10-5002102	MEDICARE TAXES	13,145
001-10-5002200	RETIREMENT CONTRIBUTIONS	104,390
001-10-5002301	HEALTH INSURANCE	189,750
001-10-5002302	LIFE INSURANCE	1,150
001-10-5002303	DISABILITY INSURANCE	6,555
001-10-5002500	UNEMPLOYMENT COMPENSATION	3,575
001-10-5002900	EMPLOYEE ASSISTANCE PROGRAM	690
PERSONAL		1,282,035
OPERATING		
001-10-5003101	LEGAL	3,000
001-10-5003405	CONTRACT SERVICES	15,000
001-10-5004230	FREIGHT & POSTAGE	5,000
001-10-5004660	OFFICE EQUIPMENT MAINTENANCE	1,000
001-10-5004901	TRAINING	500
001-10-5004910	ADVERTISING	500
001-10-5004920	OTHER MISC. EXPENDITURES	200
001-10-5005201	OPERATING SUPPLIES	6,800
OPERATING		32,000
Totals for dept 10 - CIRCUIT CIVIL		1,314,035

VOLUSIA COUNTY CLERK OF THE CIRCUIT COURT  
GENERAL FUND COURT EXPENDITURES BY DEPARTMENT  
FOR THE FISCAL YEAR ENDING SEPTEMBER 30, 2022

GL NUMBER	DESCRIPTION	ORIGINAL BUDGET
Dept 16 - CIRCUIT CRIMINAL-FELONY		
PERSONAL		
001-16-5001201	SALARIES & WAGES	1,118,720
001-16-5001400	OVERTIME WAGES	10,000
001-16-5002101	SOCIAL SECURITY TAXES	69,985
001-16-5002102	MEDICARE TAXES	16,370
001-16-5002200	RETIREMENT CONTRIBUTIONS	125,065
001-16-5002301	HEALTH INSURANCE	254,400
001-16-5002302	LIFE INSURANCE	1,400
001-16-5002303	DISABILITY INSURANCE	7,980
001-16-5002500	UNEMPLOYMENT COMPENSATION	3,575
001-16-5002900	EMPLOYEE ASSISTANCE PROGRAM	840
PERSONAL		<u>1,608,335</u>
OPERATING		
001-16-5004230	FREIGHT & POSTAGE	28,000
001-16-5004660	OFFICE EQUIPMENT MAINTENANCE	1,000
001-16-5004701	PRINTING	1,000
001-16-5004901	TRAINING	2,500
001-16-5004910	ADVERTISING	500
001-16-5004920	OTHER MISC. EXPENDITURES	100
001-16-5005201	OPERATING SUPPLIES	3,000
OPERATING		<u>36,100</u>
Totals for dept 16 - CIRCUIT CRIMINAL-FELONY		<u>1,644,435</u>
Dept 17 - CRIMINAL INTAKE		
PERSONAL		
001-17-5001201	SALARIES & WAGES	327,060
001-17-5001400	OVERTIME WAGES	4,000
001-17-5002101	SOCIAL SECURITY TAXES	20,530
001-17-5002102	MEDICARE TAXES	4,805
001-17-5002200	RETIREMENT CONTRIBUTIONS	38,305
001-17-5002301	HEALTH INSURANCE	74,250
001-17-5002302	LIFE INSURANCE	450
001-17-5002303	DISABILITY INSURANCE	2,565
001-17-5002900	EMPLOYEE ASSISTANCE PROGRAM	270
PERSONAL		<u>472,235</u>
OPERATING		
001-17-5004230	FREIGHT & POSTAGE	500
001-17-5004660	OFFICE EQUIPMENT MAINTENANCE	200
001-17-5004910	ADVERTISING	500
001-17-5004920	OTHER MISC. EXPENDITURES	100
001-17-5005201	OPERATING SUPPLIES	500
OPERATING		<u>1,800</u>
Totals for dept 17 - CRIMINAL INTAKE		<u>474,035</u>

VOLUSIA COUNTY CLERK OF THE CIRCUIT COURT  
GENERAL FUND COURT EXPENDITURES BY DEPARTMENT  
FOR THE FISCAL YEAR ENDING SEPTEMBER 30, 2022

GL NUMBER	DESCRIPTION	ORIGINAL BUDGET
Dept 19 - JUVENILE		
PERSONAL		
001-19-5001201	SALARIES & WAGES	376,155
001-19-5002101	SOCIAL SECURITY TAXES	23,325
001-19-5002102	MEDICARE TAXES	5,455
001-19-5002200	RETIREMENT CONTRIBUTIONS	37,465
001-19-5002301	HEALTH INSURANCE	82,500
001-19-5002302	LIFE INSURANCE	500
001-19-5002303	DISABILITY INSURANCE	2,850
001-19-5002900	EMPLOYEE ASSISTANCE PROGRAM	300
PERSONAL		528,550
OPERATING		
001-19-5004230	FREIGHT & POSTAGE	3,000
001-19-5004660	OFFICE EQUIPMENT MAINTENANCE	500
001-19-5004701	PRINTING	4,000
001-19-5004901	TRAINING	500
001-19-5004910	ADVERTISING	500
001-19-5004920	OTHER MISC. EXPENDITURES	100
001-19-5005201	OPERATING SUPPLIES	800
OPERATING		9,400
Totals for dept 19 - JUVENILE		537,950
Dept 21 - JURY MANAGEMENT		
PERSONAL		
001-21-5001201	SALARIES & WAGES	98,475
001-21-5002101	SOCIAL SECURITY TAXES	6,110
001-21-5002102	MEDICARE TAXES	1,430
001-21-5002200	RETIREMENT CONTRIBUTIONS	10,660
001-21-5002301	HEALTH INSURANCE	23,850
001-21-5002302	LIFE INSURANCE	150
001-21-5002303	DISABILITY INSURANCE	855
001-21-5002900	EMPLOYEE ASSISTANCE PROGRAM	90
PERSONAL		141,620
OPERATING		
001-21-5003420	JUROR PAYMENTS	90,000
001-21-5004001	LODGING	2,000
001-21-5004002	MEALS	2,500
001-21-5004004	MILEAGE & TRAVEL	300
001-21-5004230	FREIGHT & POSTAGE	30,000
001-21-5004660	OFFICE EQUIPMENT MAINTENANCE	200
001-21-5004901	TRAINING	500
001-21-5004910	ADVERTISING	500
001-21-5004920	OTHER MISC. EXPENDITURES	100
001-21-5004910	PUBLICATIONS & SUBSCRIPTIONS	100
001-21-5005201	OPERATING SUPPLIES	300
OPERATING		126,500
Totals for dept 21 - JURY MANAGEMENT		268,120

VOLUSIA COUNTY CLERK OF THE CIRCUIT COURT  
GENERAL FUND COURT EXPENDITURES BY DEPARTMENT  
FOR THE FISCAL YEAR ENDING SEPTEMBER 30, 2022

GL NUMBER	DESCRIPTION	ORIGINAL BUDGET
Dept 22 - APPEALS		
PERSONAL		
001-22-5001201	SALARIES & WAGES	44,755
001-22-5002101	SOCIAL SECURITY TAXES	2,775
001-22-5002102	MEDICARE TAXES	650
001-22-5002200	RETIREMENT CONTRIBUTIONS	8,210
001-22-5002301	HEALTH INSURANCE	8,250
001-22-5002302	LIFE INSURANCE	50
001-22-5002303	DISABILITY INSURANCE	285
001-22-5002900	EMPLOYEE ASSISTANCE PROGRAM	30
PERSONAL		<u>65,005</u>
OPERATING		
001-22-5004230	FREIGHT & POSTAGE	2,000
001-22-5005201	OPERATING SUPPLIES	200
OPERATING		<u>2,200</u>
Totals for dept 22 - APPEALS		<u>67,205</u>
Dept 26 - UNIFIED FAMILY - NON IV-D		
PERSONAL		
001-26-5001201	SALARIES & WAGES	868,940
001-26-5002101	SOCIAL SECURITY TAXES	53,880
001-26-5002102	MEDICARE TAXES	12,600
001-26-5002200	RETIREMENT CONTRIBUTIONS	99,640
001-26-5002301	HEALTH INSURANCE	189,300
001-26-5002302	LIFE INSURANCE	1,150
001-26-5002303	DISABILITY INSURANCE	6,555
001-26-5002500	UNEMPLOYMENT COMP	7,150
001-26-5002900	EMPLOYEE ASSISTANCE PROGRAM	690
PERSONAL		<u>1,239,905</u>
OPERATING		
001-26-5004004	MILEAGE & TRAVEL	300
001-26-5004230	FREIGHT & POSTAGE	14,000
001-26-5004660	OFFICE EQUIPMENT MAINTENANCE	1,000
001-26-5004701	PRINTING	3,000
001-26-5004901	TRAINING	500
001-26-5004910	ADVERTISING	500
001-26-5004920	OTHER MISC. EXPENDITURES	100
001-26-5005201	OPERATING SUPPLIES	3,000
OPERATING		<u>22,400</u>
Totals for dept 26 - UNIFIED FAMILY - NON IV-D		<u>1,262,305</u>

VOLUSIA COUNTY CLERK OF THE CIRCUIT COURT  
GENERAL FUND COURT EXPENDITURES BY DEPARTMENT  
FOR THE FISCAL YEAR ENDING SEPTEMBER 30, 2022

GL NUMBER	DESCRIPTION	ORIGINAL BUDGET
Dept 30 - CHILD SUPPORT		
PERSONAL		
001-30-5001201	SALARIES & WAGES	222,650
001-30-5002101	SOCIAL SECURITY TAXES	13,810
001-30-5002102	MEDICARE TAXES	3,230
001-30-5002200	RETIREMENT CONTRIBUTIONS	26,950
001-30-5002301	HEALTH INSURANCE	49,500
001-30-5002302	LIFE INSURANCE	300
001-30-5002303	DISABILITY INSURANCE	1,710
001-30-5002900	EMPLOYEE ASSISTANCE PROGRAM	180
PERSONAL		<u>318,330</u>
OPERATING		
001-30-5003405	CONTRACT SERVICES	18,000
001-30-5004230	FREIGHT & POSTAGE	4,000
001-30-5004901	TRAINING	500
001-30-5004910	ADVERTISING	500
001-30-5004920	OTHER MISC. EXPENDITURES	100
001-30-5005102	OFFICE EQUIPMENT <\$1,000	100
001-30-5005201	OPERATING SUPPLIES	400
OPERATING		<u>23,600</u>
Totals for dept 30 - CHILD SUPPORT		<u>341,930</u>
Dept 97 - OH ALLOCATION COURTS		
PERSONAL		
001-97-5009102	OH ALLOCATION-PERS SVC	180,335
PERSONAL		<u>180,335</u>
OPERATING		
001-97-5009103	OH ALLOCATION-OPERATING	1,487,937
OPERATING		<u>1,487,937</u>
Totals for dept 97 - OH ALLOCATION COURTS		<u>1,668,272</u>
TOTAL COURT EXPENDITURES		<u>\$ 12,161,597</u>

VOLUSIA COUNTY CLERK OF THE CIRCUIT COURT  
GENERAL FUND GENERAL GOVERNMENT EXPENDITURES BY DEPARTMENT  
FOR THE FISCAL YEAR ENDING SEPTEMBER 30, 2022

GL NUMBER	DESCRIPTION	ORIGINAL BUDGET
Dept 12 - RECORDING		
PERSONAL		
001-12-5001201	SALARIES & WAGES	\$ 883,390
001-12-5001400	OVERTIME WAGES	10,000
001-12-5002101	SOCIAL SECURITY TAXES	55,390
001-12-5002102	MEDICARE TAXES	12,450
001-12-5002200	RETIREMENT CONTRIBUTIONS	96,235
001-12-5002301	HEALTH INSURANCE	181,050
001-12-5002302	LIFE INSURANCE	1,100
001-12-5002303	DISABILITY INSURANCE	6,265
001-12-5002900	EMPLOYEE ASSISTANCE PROGRAM	810
PERSONAL		<u>1,246,690</u>
OPERATING		
001-12-5003405	CONTRACT SERVICES	10,000
001-12-5004001	LODGING	2,500
001-12-5004002	MEALS	1,000
001-12-5004230	FREIGHT & POSTAGE	1,000
001-12-5004420	BUILDING RENTAL	9,000
001-12-5004430	EQUIPMENT RENTAL	500
001-12-5004510	INSURANCE	330,000
001-12-5004660	OFFICE EQUIPMENT MAINTENANCE	7,900
001-12-5004670	OTHER MAINTENANCE - VEHICLES	15,000
001-12-5004701	PRINTING	500
001-12-5004901	TRAINING	20,000
001-12-5004920	OTHER MISC. EXPENDITURES	100
001-12-5005102	OFFICE EQUIPMENT < \$1000	12,500
001-12-5005201	OPERATING SUPPLIES	13,800
001-12-5005240	SOFTWARE	34,000
001-12-5005300	SPECIAL EVENTS	4,000
001-12-5005301	EMPLOYEE RECOGNITION	10,000
001-12-5005410	PUBLICATIONS & SUBSCRIPTIONS	250
001-12-5005430	MEMBERSHIPS & DUES	800
OPERATING		<u>472,850</u>
CAPITAL OUTLAY		
001-12-5006410	OFFICE EQUIPMENT	100,000
CAPITAL OUTLAY		<u>100,000</u>
NON-OPERATING		
001-12-5009200	RESERVES	1,223,610
NON-OPERATING		<u>1,223,610</u>
Totals for dept 12 - RECORDING		<u>3,043,150</u>
Dept 20 - MARRIAGE, TAX DEED, PASSPORT		
PERSONAL		
001-20-5001201	SALARIES & WAGES	214,500
001-20-5002101	SOCIAL SECURITY TAXES	13,300
001-20-5002102	MEDICARE TAXES	3,120
001-20-5002200	RETIREMENT CONTRIBUTIONS	19,600
001-20-5002301	HEALTH INSURANCE	49,500
001-20-5002302	LIFE INSURANCE	300
001-20-5002303	DISABILITY INSURANCE	1,710
001-20-5002900	EMPLOYEE ASSISTANCE PROGRAM	180
PERSONAL		<u>302,210</u>

VOLUSIA COUNTY CLERK OF THE CIRCUIT COURT  
GENERAL FUND GENERAL GOVERNMENT EXPENDITURES BY DEPARTMENT  
FOR THE FISCAL YEAR ENDING SEPTEMBER 30, 2022

GL NUMBER	DESCRIPTION	ORIGINAL BUDGET
OPERATING		
001-20-5004001	LODGING	600
001-20-5004002	MEALS	110
001-20-5004230	FREIGHT & POSTAGE	20,000
001-20-5004660	OFFICE EQUIPMENT MAINTENANCE	900
001-20-5004901	TRAINING	300
001-20-5004910	ADVERTISING	500
001-20-5005102	OFFICE EQUIPMENT < \$1000	900
001-20-5005201	OPERATING SUPPLIES	<u>2,500</u>
OPERATING		25,810
CAPITAL OUTLAY		
001-20-5006410	OFFICE EQUIPMENT	<u>20,000</u>
CAPITAL OUTLAY		20,000
Totals for dept 20 - MARRIAGE, TAX DEED, PASSPORT		<u>348,020</u>
Dept 23 - SUPPORT SERVICES		
PERSONAL		
001-23-5001201	SALARIES & WAGES	214,250
001-23-5002101	SOCIAL SECURITY TAXES	13,285
001-23-5002102	MEDICARE TAXES	3,110
001-23-5002200	RETIREMENT CONTRIBUTIONS	26,940
001-23-5002301	HEALTH INSURANCE	41,250
001-23-5002302	LIFE INSURANCE	250
001-23-5002303	DISABILITY INSURANCE	1,425
001-23-5002900	EMPLOYEE ASSISTANCE PROGRAM	<u>150</u>
PERSONAL		300,660
OPERATING		
001-23-5005201	OPERATING SUPPLIES	<u>1,040</u>
OPERATING		1,040
Totals for dept 23 - SUPPORT SERVICES		<u>301,700</u>
Dept 25 - RECORDS RETENTION- NONCOURT		
PERSONAL		
001-25-5001201	SALARIES & WAGES	105,670
001-25-5002101	SOCIAL SECURITY TAXES	6,550
001-25-5002102	MEDICARE TAXES	1,530
001-25-5002200	RETIREMENT CONTRIBUTIONS	11,440
001-25-5002301	HEALTH INSURANCE	24,750
001-25-5002302	LIFE INSURANCE	150
001-25-5002303	DISABILITY INSURANCE	855
001-25-5002900	EMPLOYEE ASSISTANCE PROGRAM	<u>185</u>
PERSONAL		151,130
OPERATING		
001-25-5004230	FREIGHT & POSTAGE	100
001-25-5004660	OFFICE EQUIPMENT MAINTENANCE	5,000
001-25-5005201	OPERATING SUPPLIES	<u>1,300</u>
OPERATING		6,400
Totals for dept 25 - RECORDS RETENTION- NONCOURT		<u>157,530</u>

VOLUSIA COUNTY CLERK OF THE CIRCUIT COURT  
GENERAL FUND GENERAL GOVERNMENT EXPENDITURES BY DEPARTMENT  
FOR THE FISCAL YEAR ENDING SEPTEMBER 30, 2022

GL NUMBER	DESCRIPTION	ORIGINAL BUDGET
Dept 60 - INFORMATION TECHNOLOGY		
PERSONAL		
001-60-5001201	SALARIES & WAGES	1,411,720
001-60-5001400	OVERTIME WAGES	13,000
001-60-5002101	SOCIAL SECURITY TAXES	82,030
001-60-5002102	MEDICARE TAXES	19,185
001-60-5002200	RETIREMENT CONTRIBUTIONS	157,315
001-60-5002301	HEALTH INSURANCE	191,760
001-60-5002302	LIFE INSURANCE	940
001-60-5002303	DISABILITY INSURANCE	8,650
001-60-5002900	EMPLOYEE ASSISTANCE PROGRAM	400
PERSONAL		<u>1,885,000</u>
OPERATING		
001-60-5003405	CONTRACT SERVICES	73,000
001-60-5004001	LODGING	2,700
001-60-5004002	MEALS	500
001-60-5004004	MILEAGE & TRAVEL	800
001-60-5004110	TELEPHONE & NETWORK SERVICES	30,000
001-60-5004230	FREIGHT & POSTAGE	100
001-60-5004660	OFFICE EQUIPMENT MAINTENANCE	25,000
001-60-5004901	TRAINING	10,000
001-60-5004910	ADVERTISING	500
001-60-5004920	OTHER MISC. EXPENDITURES	10,000
001-60-5005102	OFFICE EQUIPMENT < \$1000	20,000
001-60-5005201	OPERATING SUPPLIES	50,000
001-60-5005240	SOFTWARE	150,000
001-60-5005410	PUBLICATIONS & SUBSCRIPTIONS	1,400
001-60-5005430	MEMBERSHIPS & DUES	1,000
OPERATING		<u>375,000</u>
CAPITAL OUTLAY		
001-60-5006410	OFFICE EQUIPMENT	155,000
CAPITAL OUTLAY		<u>155,000</u>
Totals for dept 60 - INFORMATION TECHNOLOGY		<u>2,415,000</u>
Dept 98 - OH ALLOCATION NONCOURTS		
PERSONAL		
001-98-5009102	OH ALLOCATION-PERS SVC	492,600
PERSONAL		<u>492,600</u>
OPERATING		
001-98-5009103	OH ALLOCATION-OPERATING	87,000
OPERATING		<u>87,000</u>
Totals for dept 98 - OH ALLOCATION NONCOURTS		<u>579,600</u>
TOTAL GENERAL GOVERNMENT EXPENDITURES		<u>\$ 6,845,000</u>



VOLUSIA COUNTY CLERK OF THE CIRCUIT COURT  
GENERAL FUND OVERHEAD ALLOCATIONS BY DEPARTMENT  
FOR THE FISCAL YEAR ENDING SEPTEMBER 30, 2022

GL NUMBER	DESCRIPTION	ORIGINAL BUDGET
Dept 01 - CLERKS ADMINISTRATIVE		
PERSONAL		
001-01-5001101	CLERK'S SALARY	\$ 167,240
001-01-5001201	SALARIES & WAGES	97,405
001-01-5002101	SOCIAL SECURITY TAXES	15,215
001-01-5002102	MEDICARE TAXES	3,840
001-01-5002200	RETIREMENT CONTRIBUTIONS	114,250
001-01-5002301	HEALTH INSURANCE	16,500
001-01-5002302	LIFE INSURANCE	100
001-01-5002303	DISABILITY INSURANCE	570
001-01-5002900	EMPLOYEE ASSISTANCE PROGRAM	60
001-01-5009102	OH ALLOCATION-PERS SVC	<u>(415,180)</u>
PERSONAL		-
OPERATING		
001-01-5003101	LEGAL	5,000
001-01-5003405	CONTRACT SERVICES	50,000
001-01-5004001	LODGING	2,500
001-01-5004002	MEALS	500
001-01-5004004	MILEAGE & TRAVEL	1,000
001-01-5004230	FREIGHT & POSTAGE	3,000
001-01-5004701	PRINTING	300
001-01-5004901	TRAINING	3,000
001-01-5004920	OTHER MISC. EXPENDITURES	500
001-01-5005102	OFFICE EQUIPMENT < \$1000	500
001-01-5005201	OPERATING SUPPLIES	500
001-01-5005300	SPECIAL EVENTS	1,000
001-01-5005301	EMPLOYEE RECOGNITION	3,000
001-01-5005410	PUBLICATIONS & SUBSCRIPTIONS	5,000
001-01-5005430	MEMBERSHIPS & DUES	4,000
001-01-5009103	OH ALLOCATION-OPERATING	<u>(79,800)</u>
OPERATING		-
Totals for dept 01 - CLERKS ADMINISTRATIVE		<u>-</u>
Dept 03 - HUMAN RESOURCES		
PERSONAL		
001-03-5001201	SALARIES & WAGES	194,520
001-03-5002101	SOCIAL SECURITY TAXES	12,060
001-03-5002102	MEDICARE TAXES	2,820
001-03-5002200	RETIREMENT CONTRIBUTIONS	26,500
001-03-5002301	HEALTH INSURANCE	33,000
001-03-5002302	LIFE INSURANCE	200
001-03-5002303	DISABILITY INSURANCE	1,140
001-03-5002900	EMPLOYEE ASSISTANCE PROGRAM	200
001-03-5009102	OH ALLOCATION-PERS SVC	<u>(270,440)</u>
PERSONAL		-

VOLUSIA COUNTY CLERK OF THE CIRCUIT COURT  
GENERAL FUND OVERHEAD ALLOCATIONS BY DEPARTMENT  
FOR THE FISCAL YEAR ENDING SEPTEMBER 30, 2022

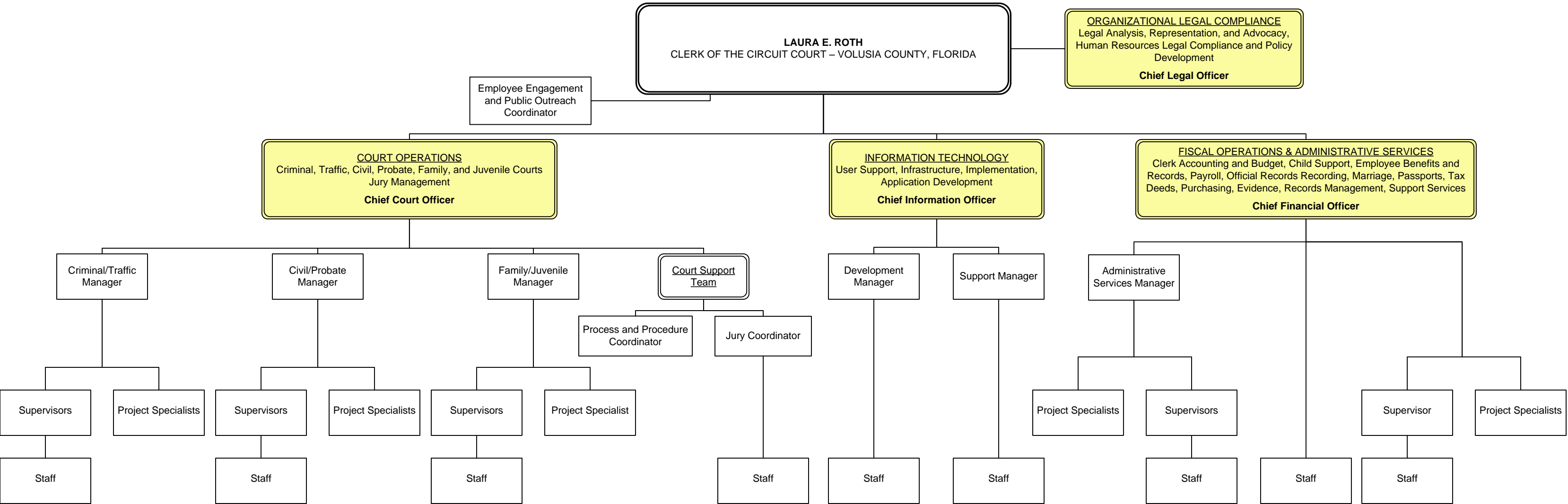
GL NUMBER	DESCRIPTION	ORIGINAL BUDGET
OPERATING		
001-03-5003101	LEGAL	2,000
001-03-5003405	CONTRACT SERVICES	500
001-03-5004001	LODGING	2,000
001-03-5004002	MEALS	500
001-03-5004004	MILEAGE & TRAVEL	200
001-03-5004230	FREIGHT & POSTAGE	300
001-03-5004901	TRAINING	3,000
001-03-5004920	OTHER MISC. EXPENDITURES	200
001-03-5005201	OPERATING SUPPLIES	1,000
001-03-5005210	UNIFORMS	800
001-03-5005301	EMPLOYEE RECOGNITION	2,200
001-03-5005430	MEMBERSHIPS & DUES	2,000
001-03-5009103	OH ALLOCATION-OPERATING	(14,700)
OPERATING		-
Totals for dept 03 - HUMAN RESOURCES		-
Dept 11 - RECORDS MGMT - ADMINISTRATIVE		
OPERATING		
001-11-5004001	LODGING	500
001-11-5004002	MEALS	500
001-11-5004660	OFFICE EQUIPMENT MAINTENANCE	8,000
001-11-5004701	PRINTING	300
001-11-5004901	TRAINING	1,000
001-11-5004920	OTHER MISC. EXPENDITURES	2,200
001-11-5005102	OFFICE EQUIPMENT < \$1000	1,000
001-11-5005201	OPERATING SUPPLIES	3,000
001-11-5005240	SOFTWARE	500
001-11-5005430	MEMBERSHIPS & DUES	600
001-11-5009103	OH ALLOCATION-OPERATING	(17,600)
OPERATING		-
Totals for dept 11 - RECORDS MGMT - ADMINISTRATIVE		-
Dept 18 - PUCHASING		
OPERATING		
001-18-5004230	FREIGHT & POSTAGE	192,000
001-18-5004430	EQUIPMENT RENTAL	3,000
001-18-5004660	OFFICE EQUIPMENT MAINTENANCE	5,000
001-18-5004701	PRINTING	10,000
001-18-5004920	OTHER MISC EXPENDITURES	100
001-18-5005102	OFFICE EQUIPMENT < \$1000	2,000
001-18-5005201	OPERATING SUPPLIES	23,000
001-18-5005210	UNIFORMS	1,000
001-18-5009103	OH ALLOCATION-OPERATING	(236,100)
OPERATING		-
Totals for dept 18 - PUCHASING		-

VOLUSIA COUNTY CLERK OF THE CIRCUIT COURT  
GENERAL FUND OVERHEAD ALLOCATIONS BY DEPARTMENT  
FOR THE FISCAL YEAR ENDING SEPTEMBER 30, 2022

GL NUMBER	DESCRIPTION	ORIGINAL BUDGET
Dept 29 - ACCOUNTING		
PERSONAL		
001-29-5001201	SALARIES & WAGES	382,790
001-29-5002101	SOCIAL SECURITY TAXES	23,735
001-29-5002102	MEDICARE TAXES	5,550
001-29-5002200	RETIREMENT CONTRIBUTIONS	68,020
001-29-5002301	HEALTH INSURANCE	57,750
001-29-5002302	LIFE INSURANCE	350
001-29-5002303	DISABILITY INSURANCE	1,995
001-29-5002900	EMPLOYEE ASSISTANCE PROGRAM	210
001-29-5009102	OH ALLOCATION-PERS SVC	<u>(540,400)</u>
PERSONAL		-
OPERATING		
001-29-5003201	ACCOUNTING & AUDITING	30,000
001-29-5003405	CONTRACT SERVICES	30,000
001-29-5004001	LODGING	1,500
001-29-5004002	MEALS	300
001-29-5004004	MILEAGE & TRAVEL	1,000
001-29-5004230	FREIGHT & POSTAGE	5,000
001-29-5004660	OFFICE EQUIPMENT MAINTENANCE	500
001-29-5004901	TRAINING	1,000
001-29-5004910	ADVERTISING	3,000
001-29-5004920	OTHER MISC. EXPENDITURES	200
001-29-5005102	OFFICE EQUIPMENT < \$1000	1,000
001-29-5005201	OPERATING SUPPLIES	2,500
001-29-5005410	PUBLICATIONS & SUBSCRIPTIONS	1,200
001-29-5005430	MEMBERSHIPS & DUES	1,000
001-29-5009103	OH ALLOCATION-OPERATING	<u>(78,200)</u>
OPERATING		-
Totals for dept 29 - ACCOUNTING		<u>-</u>
Dept 97 - OH ALLOCATION COURTS		
PERSONAL		
001-97-5009102	OH ALLOCATION-PERS SVC	<u>180,335</u>
PERSONAL		180,335
OPERATING		
001-97-5009103	OH ALLOCATION-OPERATING	<u>1,487,937</u>
OPERATING		1,487,937
Totals for dept 97 - OH ALLOCATION COURTS		<u>1,668,272</u>
Dept 98 - OH ALLOCATION NONCOURTS		
PERSONAL		
001-98-5009102	OH ALLOCATION-PERS SVC	<u>492,600</u>
PERSONAL		492,600
OPERATING		
001-98-5009103	OH ALLOCATION-OPERATING	<u>87,000</u>
OPERATING		87,000
Totals for dept 98 - OH ALLOCATION NONCOURTS		<u>579,600</u>
TOTAL OVERHEAD ALLOCATIONS		<u>\$ 2,247,872</u>

VOLUSIA COUNTY CLERK OF THE CIRCUIT COURT  
SPECIAL REVENUE FUNDS BUDGET SUMMARY  
FOR THE FISCAL YEAR ENDING SEPTEMBER 30, 2022

GL NUMBER	DESCRIPTION	ORIGINAL BUDGET
<b>COURT MODERNIZATION TRUST FUND</b>		
ESTIMATED REVENUES		
168-00-3410103	MTF FEE COURT TECH \$1.90	\$ 1,550,000
168-00-3611140	INTEREST INCOME - MTF \$1.90	1,700
168-00-3890010	CARRY FORWARD	3,152,300
TOTAL ESTIMATED REVENUES		<u>4,704,000</u>
APPROPRIATIONS		
168-00-5001201	SALARIES & WAGES	385,165
168-00-5002101	SOCIAL SECURITY TAXES	23,880
168-00-5002102	MEDICARE TAXES	5,585
168-00-5002200	RETIREMENT CONTRIBUTIONS	42,370
168-00-5002301	HEALTH INSURANCE	42,840
168-00-5002302	LIFE INSURANCE	210
168-00-5002303	DISABILITY INSURANCE	1,935
168-00-5002900	Employee Assist Program	85
168-00-5003405	CONTRACT SERVICES	375,000
168-00-5004660	OFFICE EQUIPMENT MAINTENANCE	200,000
168-00-5005102	OFFICE EQUIPMENT < \$1000	2,500
168-00-5005240	SOFTWARE	175,000
168-00-5005410	PUBLICATIONS & SUBSCRIPTIONS	3,200
168-00-5006410	OFFICE EQUIPMENT	100,000
168-00-5009200	RESERVES	3,346,230
TOTAL APPROPRIATIONS		<u>4,704,000</u>
NET OF REVENUES/APPROPRIATIONS - FUND 168		<u>\$ -</u>
<b>RECORDS MODERNIZATION TRUST FUND</b>		
ESTIMATED REVENUES		
169-00-3410101	MTF RECORDING FEE \$1/.50	\$ 500,000
169-00-3890010	CARRY FORWARD	1,269,200
TOTAL ESTIMATED REVENUES		<u>1,769,200</u>
APPROPRIATIONS		
169-00-5003405	CONTRACT SERVICES	90,000
169-00-5004660	OFFICE EQUIPMENT MAINTENANCE	50,000
169-00-5005102	OFFICE EQUIPMENT < \$1000	1,000
169-00-5005240	SOFTWARE	50,000
169-00-5006410	OFFICE EQUIPMENT	50,000
169-00-5009200	RESERVES	1,528,200
TOTAL APPROPRIATIONS		<u>1,769,200</u>
NET OF REVENUES/APPROPRIATIONS - FUND 169		<u>\$ -</u>
ESTIMATED REVENUES - ALL FUNDS		\$ 2,051,700
APPROPRIATIONS - ALL FUNDS		1,598,770
NET OF REVENUES/APPROPRIATIONS - ALL FUNDS		<u>\$ 452,930</u>



CLERK OF THE CIRCUIT COURT - VOLUSIA COUNTY, FLORIDA  
 BUDGETED FTE SCHEDULE  
 FOR THE FISCAL YEAR ENDING SEPTEMBER 30, 2022

Code	DEPARTMENT	2022 FTE's	2021 FTE's	2020 FTE'S	2019 FTE's	2018 FTE'S	2017 FTE'S
04	COUNTY CIVIL	11	10	11	14	15	17
06	TRAFFIC	39	39	42	40	39	41
07	COUNTY CRIMINAL	18	16	21	19	21	22
08	PROBATE	14	13	14	13	12.5	15
09	FAMILY LAW	3	3	3	17	20	16
10	CIRCUIT CIVIL	23	22	24	26	25	25
16	CIRCUIT CRIMINAL	28	28	32	33	30	31
17	CRIMINAL INTAKE	9	8	9	8	8.5	8
19	JUVENILE	10	7	8	9	10	11
21	JURY MANAGEMENT	3	3	3	2	3	3.5
22	APPEALS	1	1	1	1	1	4.5
26	UNIFIED FAMILY	23	24	25	12	5	8
30	CHILD SUPPORT	6	7	7	8	8.5	9.5
12	RECORDING	23	18.5	20.7	21.5	20	21
20	MARRIAGE, TAX DEED	6	10	11	10	11	9
23	SUPPORT SERVICES - COURIER	5	3	3	3	3	3
25	RECORDS RETENTION	3	5	5	4	9	5
01	CLERK ADMINISTRATION	2	2	2.8	2	2	3
03	HUMAN RESOURCES	4	4	4	3	3	2
29	ACCOUNTING	8	8	8	6	7	6
60	INFORMATION TECHNOLOGY	19.2	18.2	16.4	19	15	17
168	COURT MODERNIZATION TRUST	4.2	6.6	2.6	0	0	0
	TOTALS	262.4	256.3	273.5	270.5	268.5	277.5